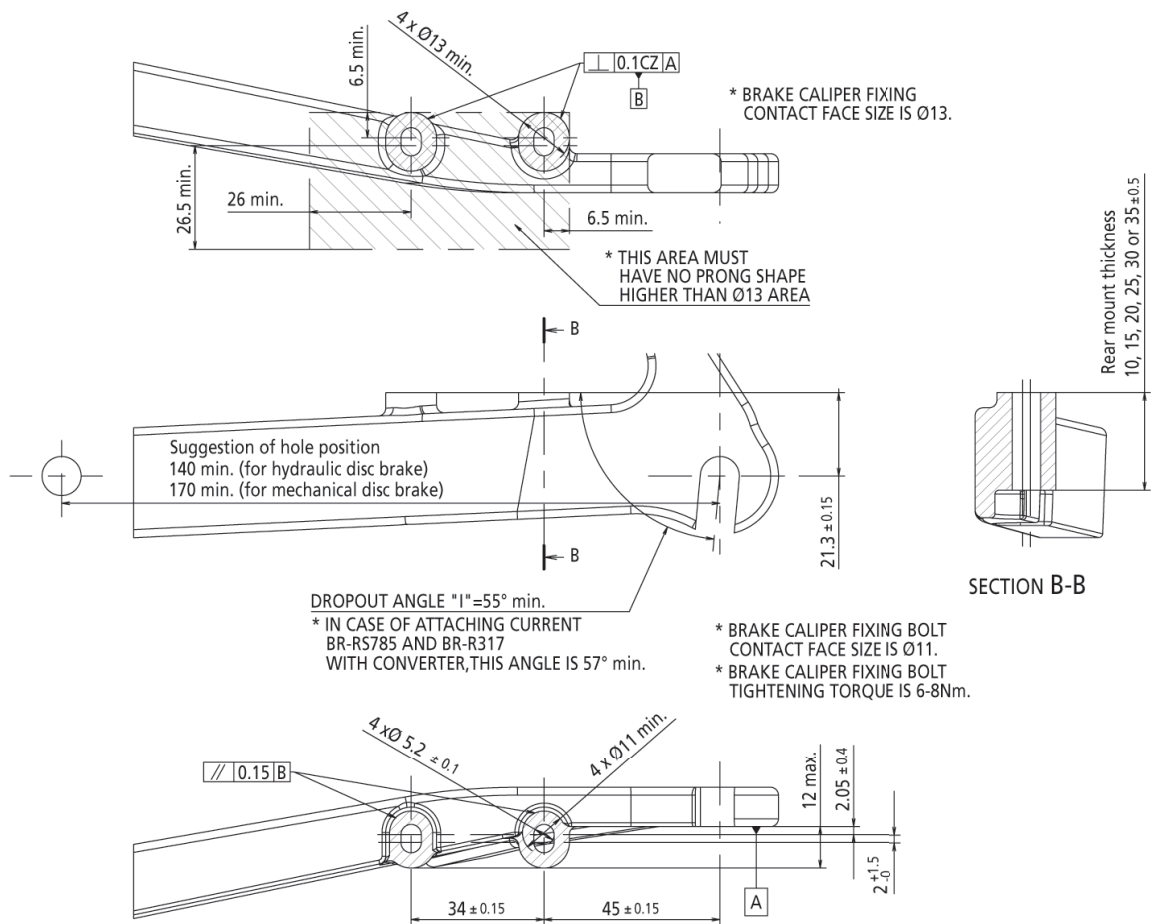


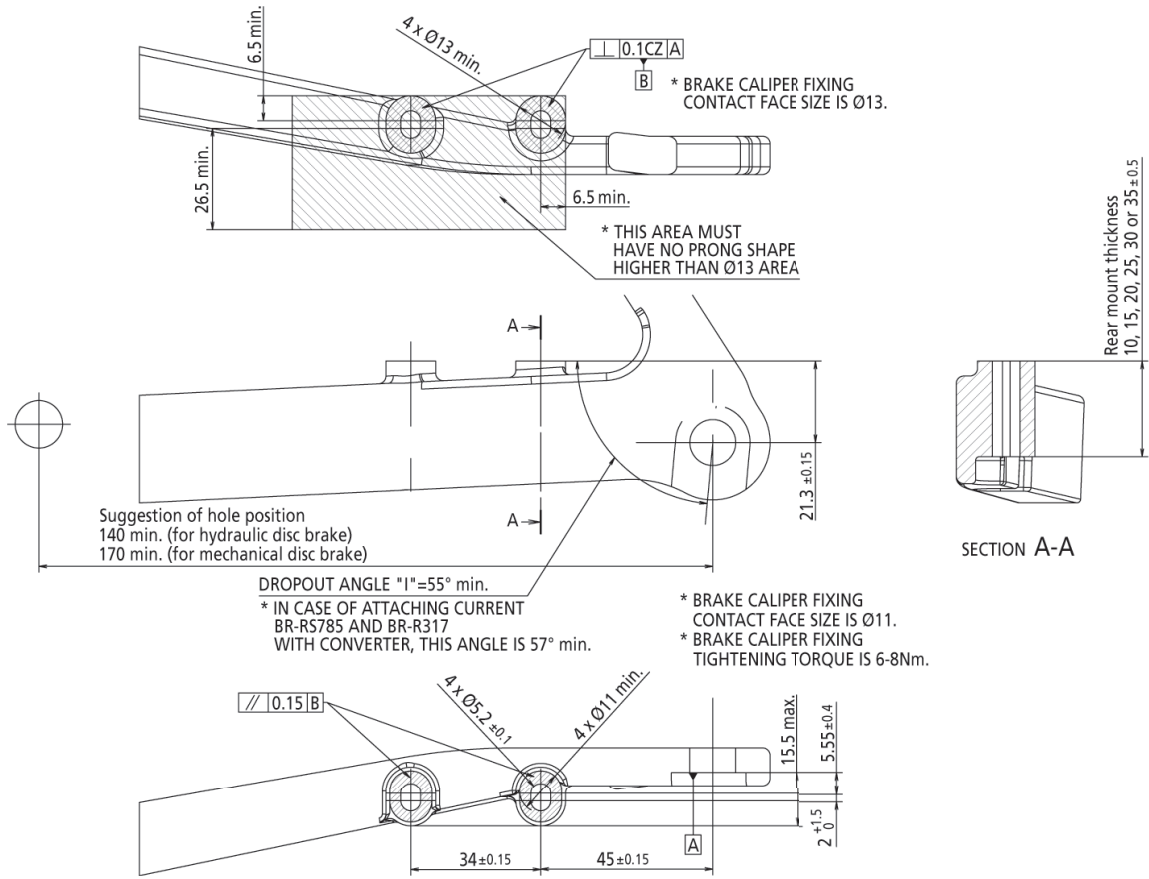
Rear mount dimensions for R160/180 (for $\varnothing 160/180$ mm disc brake rotor)

C-599

QR type



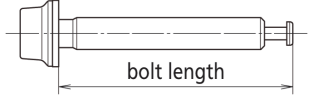
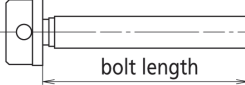
12 mm E-THRU type



Compatibility of disc brake caliper and disc brake rotor

Frame for R160/180	Disc brake rotor	
	ø180 mm rear	ø160 mm rear
BR-R9170	-	✓
BR-R8070	✓	✓
BR-R7070	✓	✓
BR-4770	✓	✓
BR-R5405	✓	✓
BR-R5305	✓	✓
BR-RX810	✓	✓
BR-RX400	✓	✓
BR-UR300 *	✓	-
BR-M9110	-	✓
BR-M8110	✓	✓
BR-M7110	✓	✓

* No need mount adapter

Rear mount thickness (mm)		10	15	20	25	30	35
Fixing bolt length	Flat mount fixing bolt length (mm) 	23.2	28.2	33.2	38.2	43.2	48.2
	Converter fixing bolt length (mm) 	16.8	28.2	26.8	31.8	36.8	41.8

NOTE

Please check in advance with the bicycle manufacturer or supplier in regards to the influence of heat generated by the disc brake on performance and quality, such as the strength of the frame, under actual usage conditions.

The heat generated when braking differs depending on the brake, brake boss, and other factors; however, in tests carried out under conditions set by SHIMANO, it has been confirmed that the temperature of the frame mount reaches up to 120°C.